



Electric convectors

Product range



Built-in Wi-Fi *

Distant control
any number
of convectors

Combining areas
in zones individual
settings
for each area

Application
for climate control

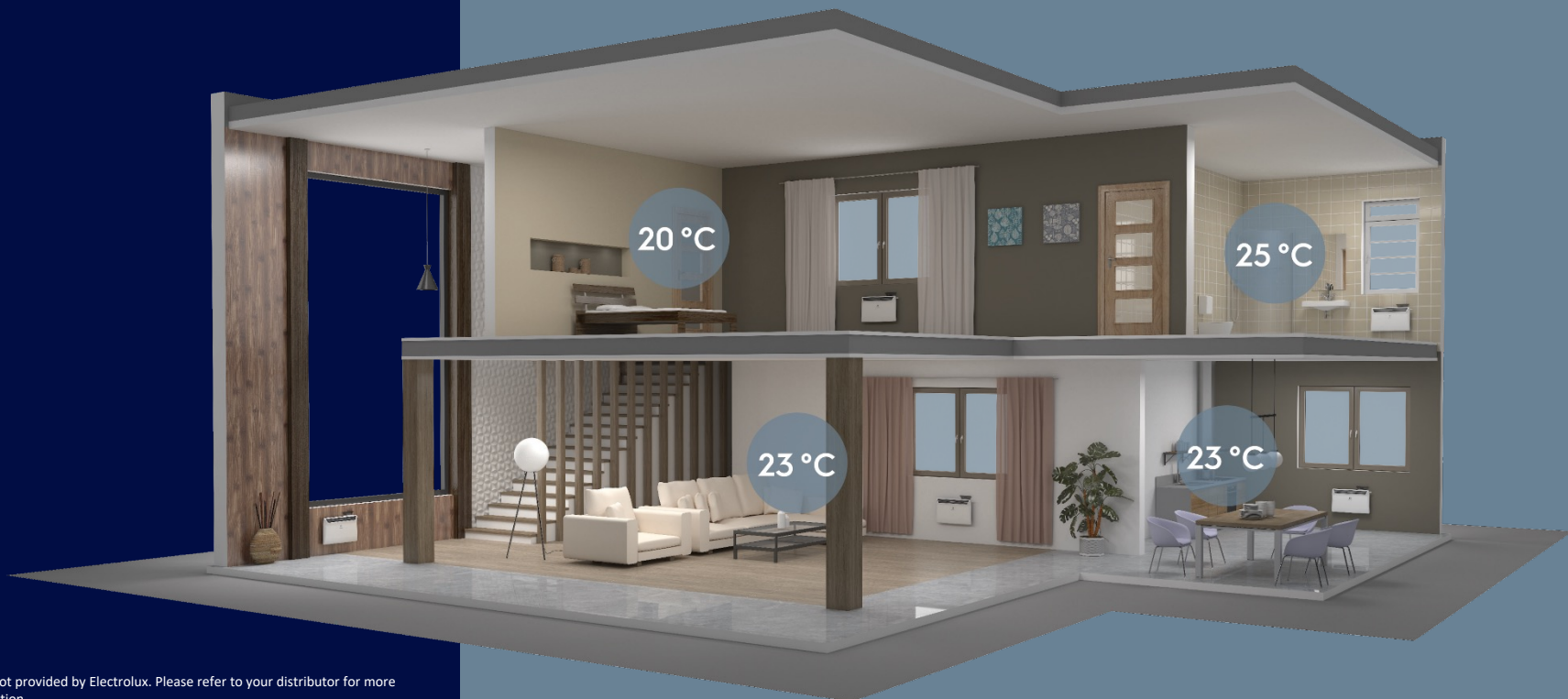
* Built-in Wi-Fi is only available for the models with the digital INVERTER control box.
Application is not provided by Electrolux. Please refer to your distributor for more
detailed information.



Control via Wi-Fi

Special mobile app*

Creating possibility of intelligent
electrical heating system



*Application is not provided by Electrolux. Please refer to your distributor for more detailed information.

Unique heating element Hedgehog



20% faster heating

The warm-up time 20% faster due to 20% increased heat-transfer area of the heating element.

The size is 20% more compact

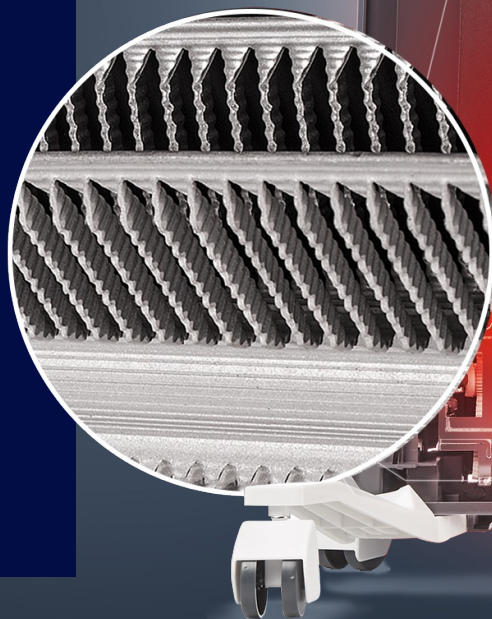
Due to the unique patented shape of the heating element, increased power achieves in compact size.

Warmth due to 15%

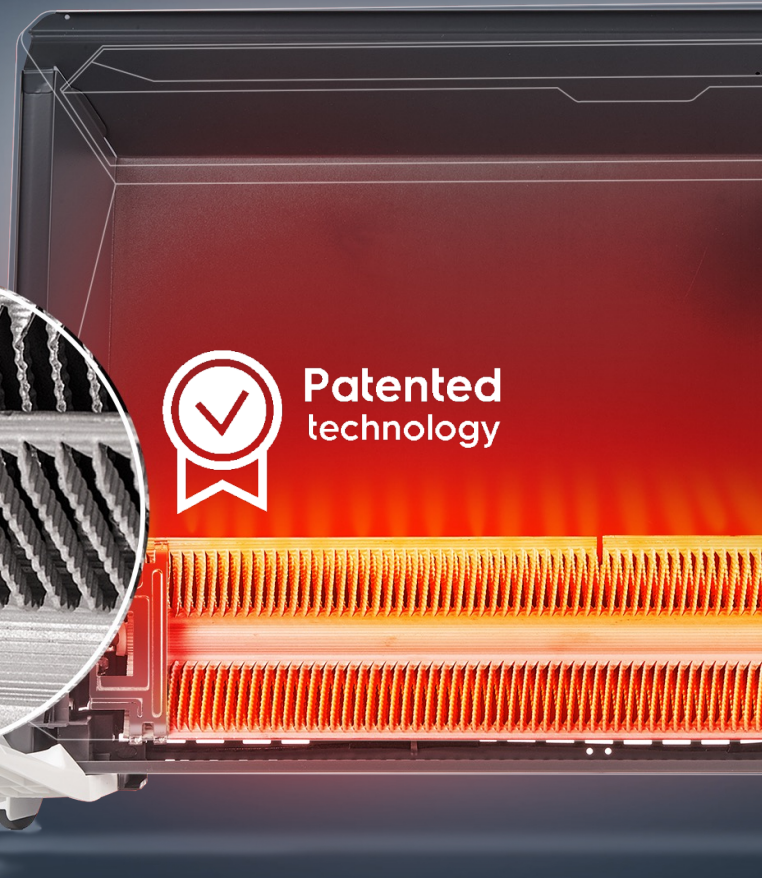
lowered temperature of heating element and body.

Absolutely noiseless heating

Thanks to the special heating element alloy.



**Patented
technology**



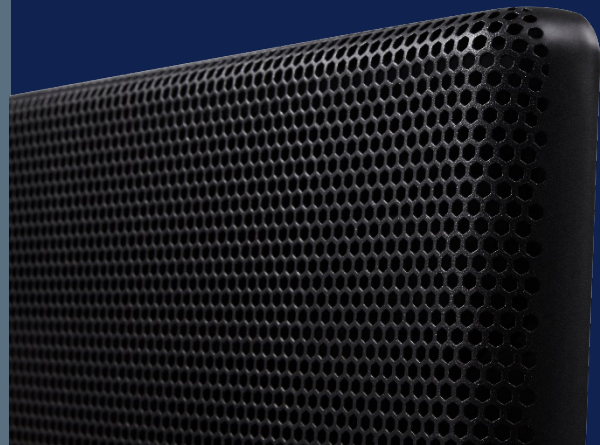
ECH/AT / ECH/AT SB / ECH/AT MG

New name in heating

3 times more economical than conventional
with energy efficient technology digital INVERTER



- Color LED display
- Wi-Fi control
- Programming 24/7
- Heating element HEDGEHOG
- Stylish and stable chassis doesn't block the incoming air flow
- Full-size 4D flow
- Fabric cover "Space Suit"



1500/2000/2500 W

ECH/BM

Technologies in luxury

Marble panel heat-resistant glass ceramic



- Control panel digital INVERTER
- Full-size air outlet grid for directed effective convective flow distribution
- Open window sensor



ECH/AG2



1000/1500/1800/2200/**2800 W**

- Mechanical, electronic and digital INVERTER control box
- Hedgehog – heating element
- Wi-Fi control (with digital INVERTER control box)
- "Fine Screen" - patented design of grid

EIH/AG2



1000/1500/2000 W

- Full-size louvres for full-fledged convective air flow distribution
- Perforated front panel for soft heating
- Mobile movement – easy movement on any surface
- Mechanical, electronic and digital INVERTER control box

ECH/T



1000/1500/2000 W

- Floor installation
- Protection standard IP24
- HD air intake with increased grid area for maximum air inflowing
- Electronic and mechanical thermostat



Electrolux